

Q-CAD: QoS and Context Aware Discovery Framework for Mobile Systems

Licia Capra, **Stefanos Zachariadis**, Cecilia Mascolo



Background

- Pervasive Computing Environment
 - Users reason in tasks
- Task:
 - “I want to print a picture”
 - Binding to a remote service
 - Getting the code to talk to the remote service
- Many choices for each task to be made
 - Context
 - QoS
 - Different ways to deal with choice



Q-CAD

- Application – Aware framework
- QoS-based Context – Aware Resource Discovery Framework for Mobile Devices
- Resource:
 - Sensor, Service, Component
 - Resource Descriptor
- Context
 - Application Profile
- QoS
 - Utility Function

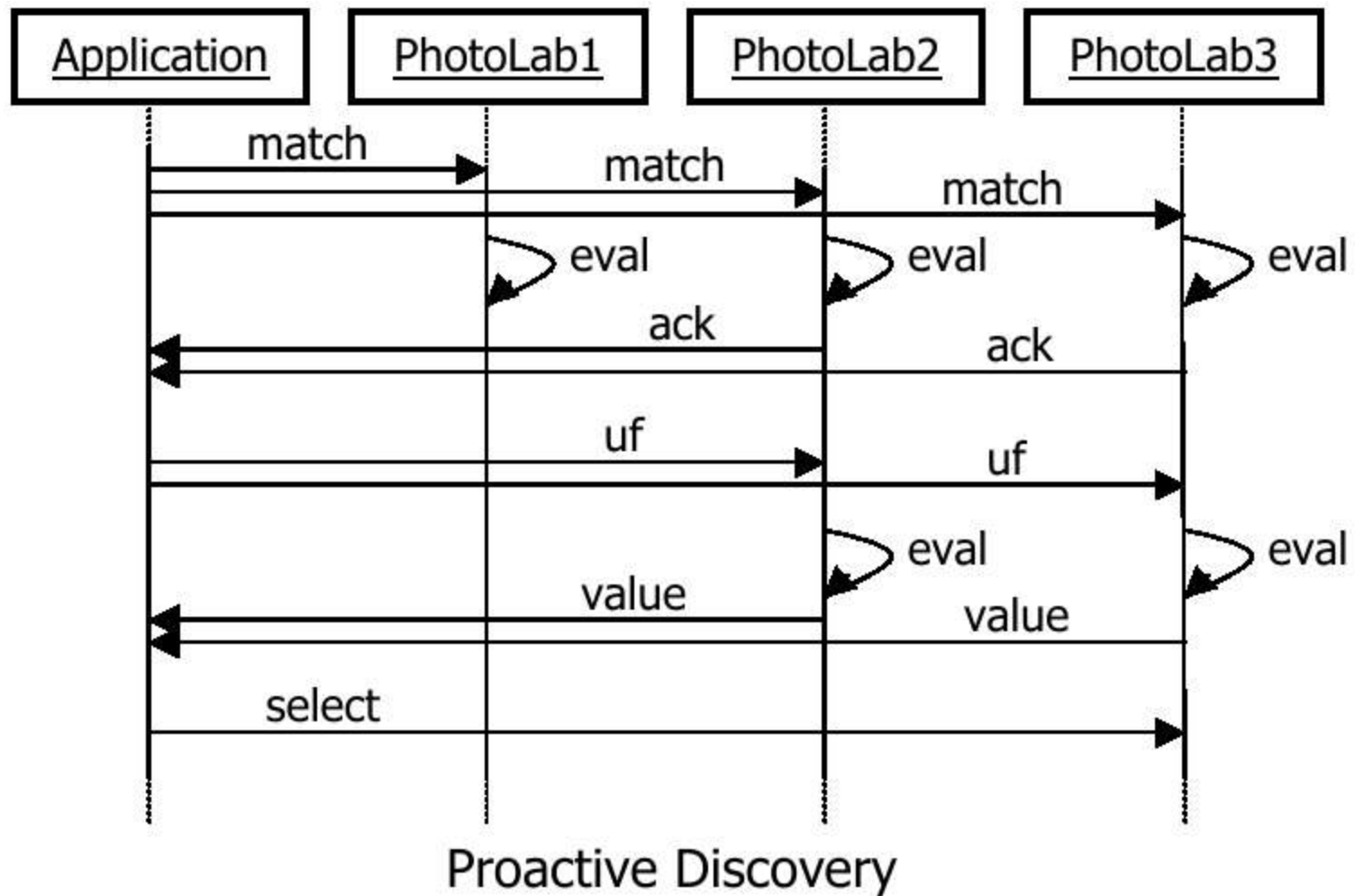


Q-CAD Basics

- Proactive & Reactive Actions
- Binding
 - Association of component with resource
- Application Profile
 - Preconditions, context evaluation at many stages
 - “Pruning”
- Utility Function
 - Evaluated locally or remotely
 - Notification to the user
 - Selection



Discovery Protocol Sample



Conclusion

- Q-CAD
 - QoS and context aware framework for resource discovery
 - Component, Sensor, Service
 - Application Profiles
 - Utility Functions
 - Protocol can be recursive

More information at:

<http://www.cs.ucl.ac.uk/staff/s.zachariadis/>

